



Landeck compliance with extended search profiles, artifact and file capture in ADF PRO

Apr 28, 2026



SHAJI DAMODHARAN
Technical Support and
Training Specialist



Effects on Digital Investigations

The Landeck Ruling

What Does This Mean for Digital Investigations?



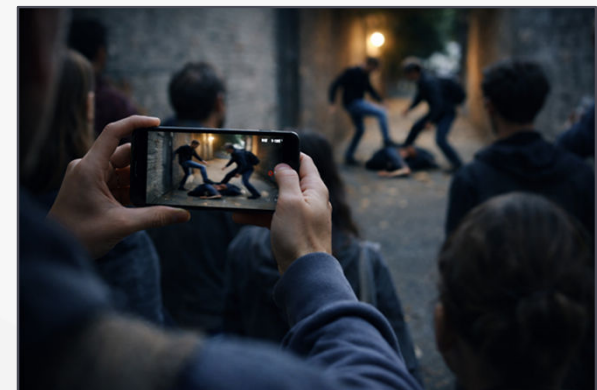
- Searches of Digital Devices Seen as Intrusive
 - Personal, sensitive data
 - Risk of Collateral Intrusion and mitigation
- New Default - Independent Prior Authorisation (EU Centric)
 - By court or independent authority
 - Principle of Proportionality
 - Further steps taken before accessing the data
- Proportionality
 - Acquiring relevant data proportionate to the offence
 - Consideration for targeted data collection
 - Not a 'fishing expedition' to collect everything "just in case"
 - Tailored Digital Forensic strategies - case by case, varies by offence...



Evidence from Victims and Witnesses



- Concerns about reporting crimes include personal or private data being accessed
- Mitigate risks related to Collateral Intrusion & Privacy
- Increased confidence and participation in providing evidence
- Increased likelihood of successful outcomes - safeguarding victims and prosecuting offenders

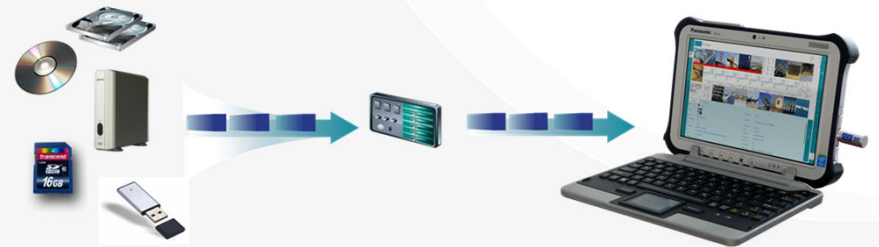


How can ADF PRO help?

ADF PRO - An introduction



- Triage of Computers, Digital Media and Mobile Devices
- Can be run from a Desktop
- Live and Boot mode option from a Collection Key
- RAM extraction and Drive Imaging capabilities
- Forensically sound
- Advanced Logical Acquisition for Mobile Devices
- Screen Capture & OCR



iOS

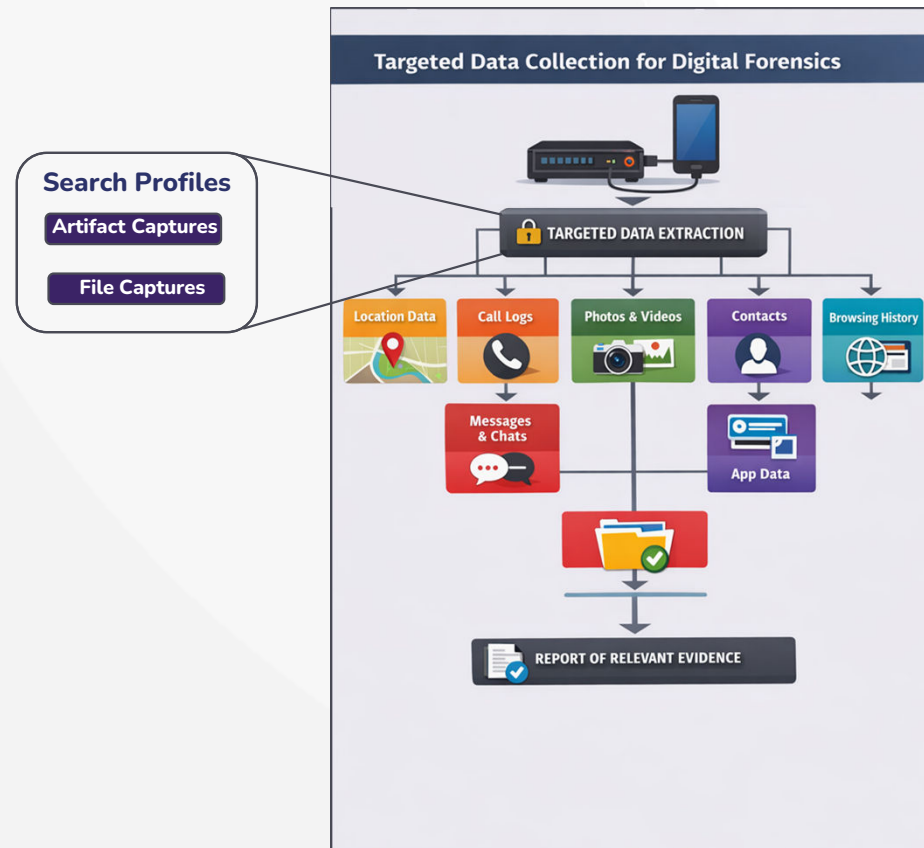


Satisfying the Landeck Ruling with ADF PRO



- Search Profiles
- Captures
- Target Data collection
- Compliance with Landeck Ruling
- Users - Greater control and flexibility

Let's see how!



Case Study - Alarming Llamas



An Organised Crime Group (OCG) known as 'ANIMAL ADVENTURE' is believed to be involved in facilitating the capture and illegal trafficking of llamas.

Intelligence suggests that the individuals named, Ezra LILAC, and Chaz VALENTINE, are members of this group with LILAC being the kingpin while VALENTINE acts as the middleman, co-ordinating the group's criminal activities.

You have received information that LILAC uses an iPhone to co-ordinate the group's activities via, WhatsApp.

Intelligence indicates that the group has conducted surveillance on, taking photos of specific venues in LONDON and the SOUTH EAST of ENGLAND, UK, and that they intend to execute their plan imminently.

Case Study - Alarming Llamas



As a result of this information, the appropriate authorities have been obtained for the arrest of LILAC and access to his personal data in order to assist the investigation.

The investigation is in the early stages and you have been provided with a large dataset (Full File System extraction).

You are required to build a Search Profile containing Captures using the information above to identify the following, while considering the Landeck Ruling:

- a) identify other members of this OCG who may be of interest to law enforcement.
- b) identify evidence (Calls, Chat/Messaging, Internet Browsing History and Search terms, Pictures with Geo location data) of any specific venues that the group may have conducted surveillance on.

The Search Profile, Captures and Filters must be used to minimise collateral intrusion, collecting evidence relevant to this investigation.



SAVE ME !





Key Takeaways

- Utilizing Search Profiles & Captures in ADF PRO
- Building a Tailored and Flexible Framework
- Targeted Data Collection
- Mitigating Collateral Intrusion and Privacy Concerns
- Complying with the Landeck Ruling

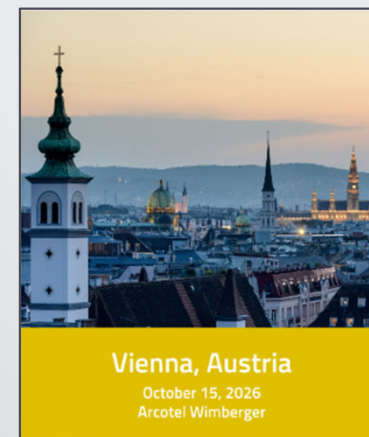
Thank You | Q&A



Shaji Damodharan
sdamodharan@adfsolutions.com



Request a FREE Trial of
ADF Pro Today!



Meet us at the Digital Investigations
Conference (Oct 15)

ADF Solutions, Inc.
www.adfsolutions.com